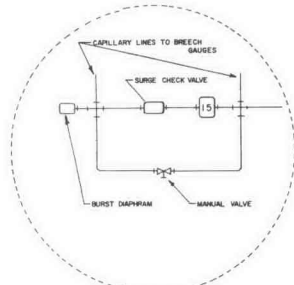
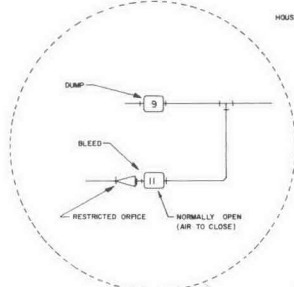


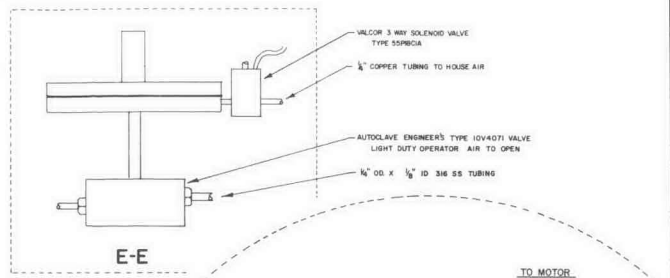
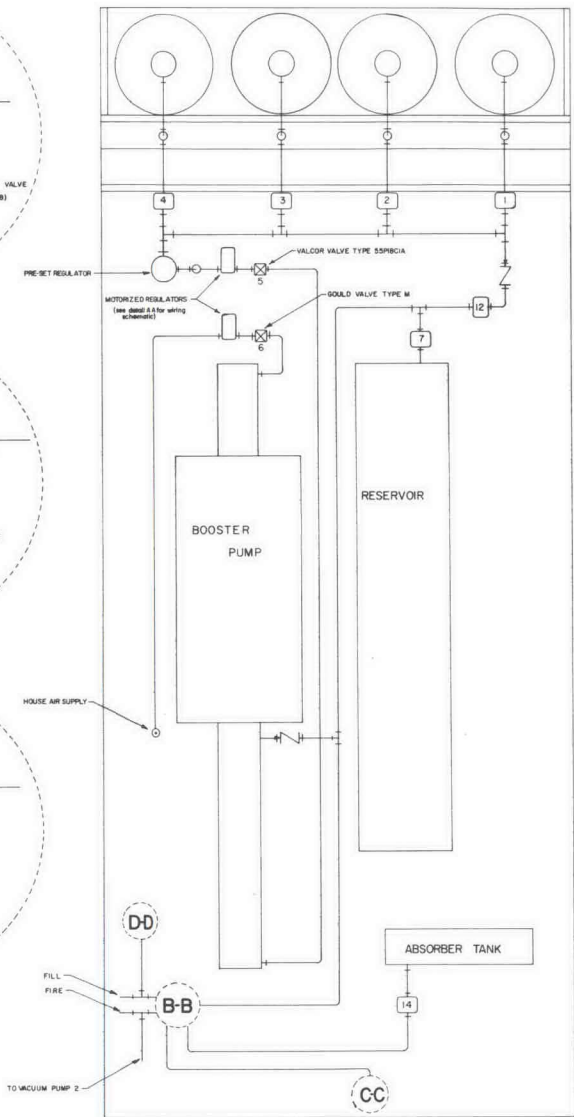
B-B



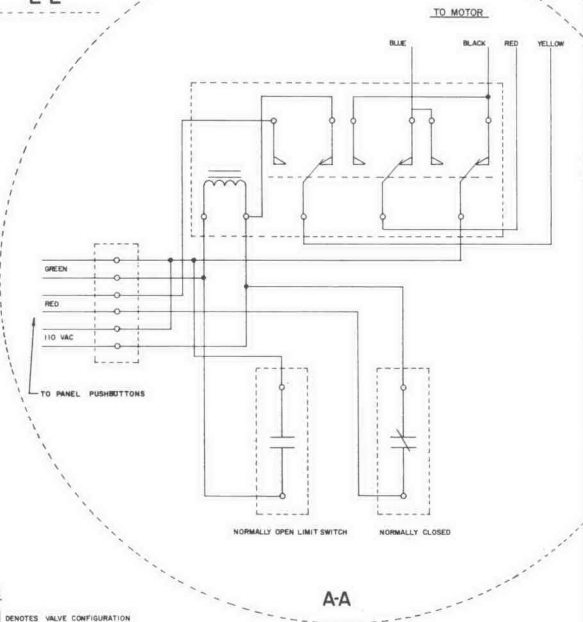
C-C



D-D



E-E



A-A

NOTES

- 1 [ ] DENOTES VALVE CONFIGURATION AS SHOWN IN DETAIL E-E
- 2 SURGE CHECK IS AUTOCLAVE TYPE SK-442E
- 3 THE TWO CHECK VALVES SHOWN ARE AUTOCLAVE TYPE SK04400
- 4 THE PLUMBING TO THE VALCOR CONTROL VALVES IS NOT SHOWN ON THIS SCHEMATIC
- 5 THE RUPTURE DISC IN DETAIL C.C IS SET TO BURST AT 1900 psig.

WASHINGTON STATE UNIVERSITY	
SHOCK DYNAMICS LABORATORY	
GAS GUN HIGH-PRESSURE SYSTEM	
DATE: SEPT 3, 1948	DRAWN BY: JAZ
SCALE: None	Dwg No 9268002